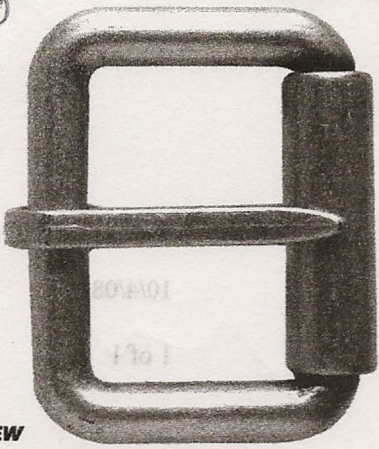
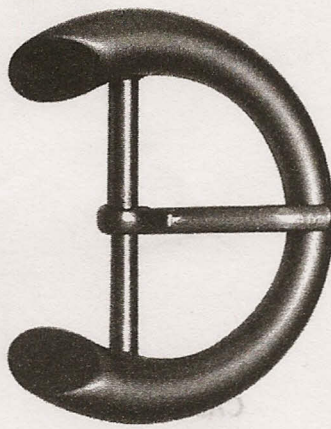


1 1/2" BUCKLES (ACTUAL SIZE)

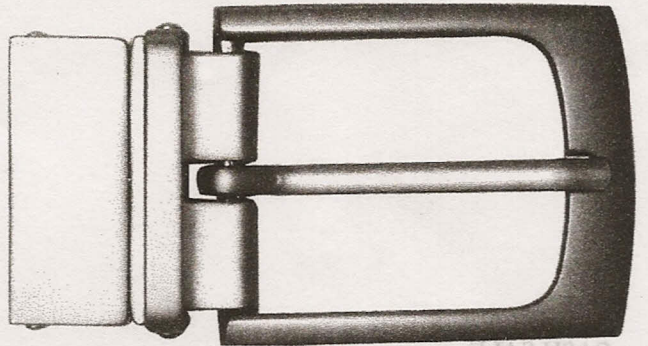


✓ NEW

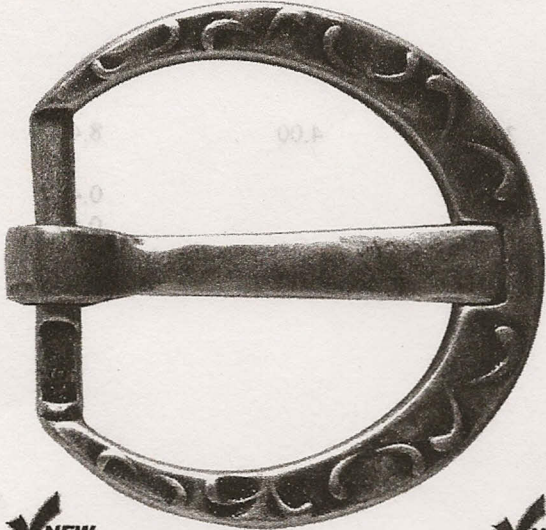
C-1879 1 1/2" Roller buckle  
Old Silver.



✓ NEW C-1902 1 1/2"  
Gold, Nickel.

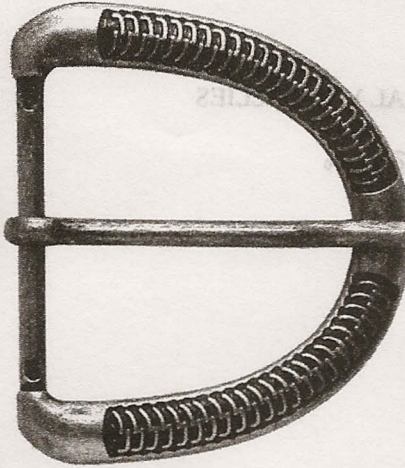


✓ NEW C-1897 1 1/2" Twist buckle for a  
reversible belt. Nickel.

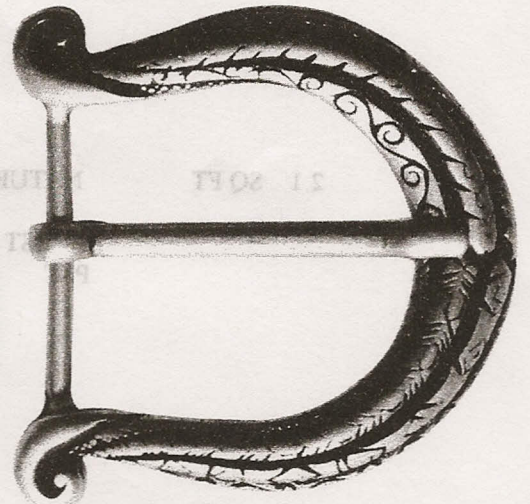


✓ NEW

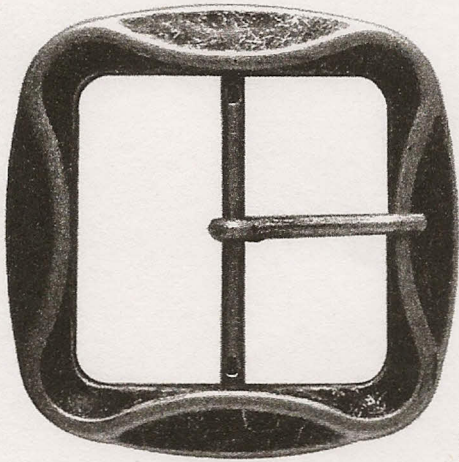
C-1871 1 1/2" Old Silver.



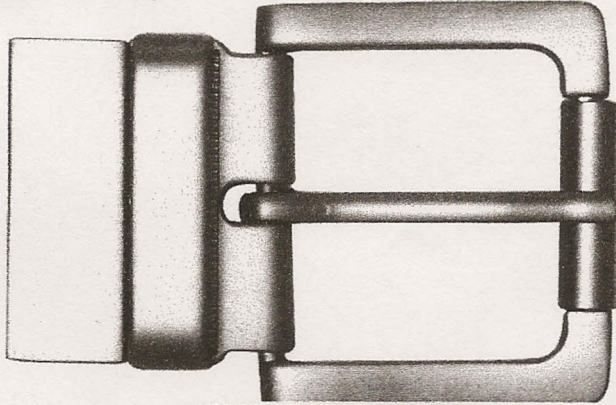
✓ NEW C-1873 1 1/2" Old Silver.



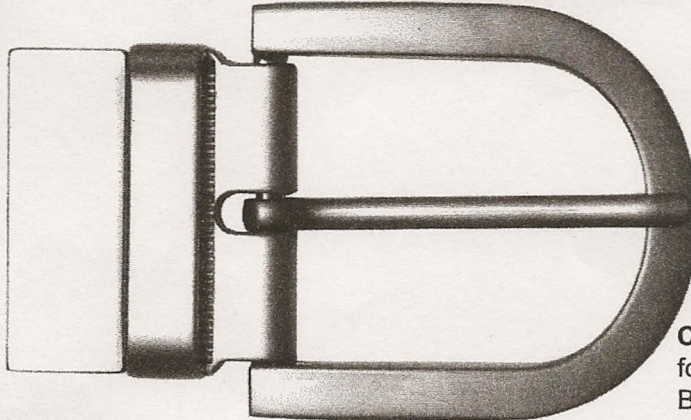
✓ NEW C-1882 1 1/2"  
Antique Brass, Old Silver.



✓ NEW C-1874 1 1/2"  
Old Silver.



✓ NEW C-1898 1 1/2" Twist  
buckle for a reversible  
belt, with roller. Nickel.



✓ NEW C-1904 1 1/2" Twist buckle  
for a reversible belt.  
Brushed Nickel.