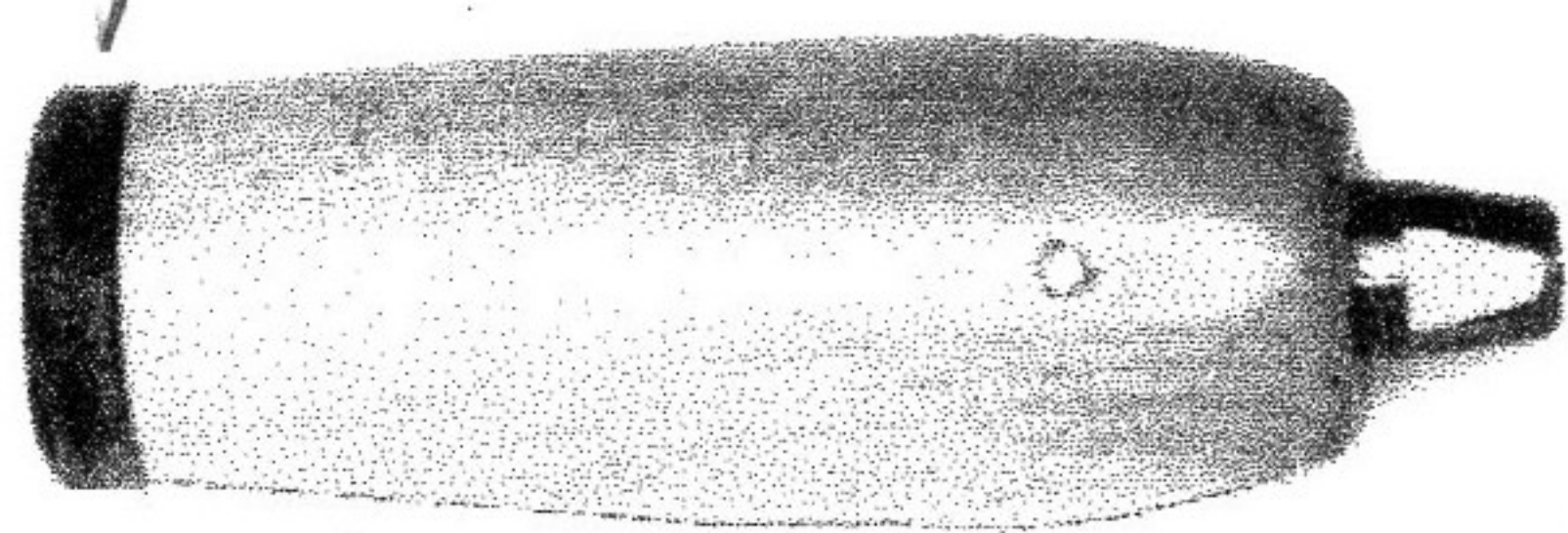
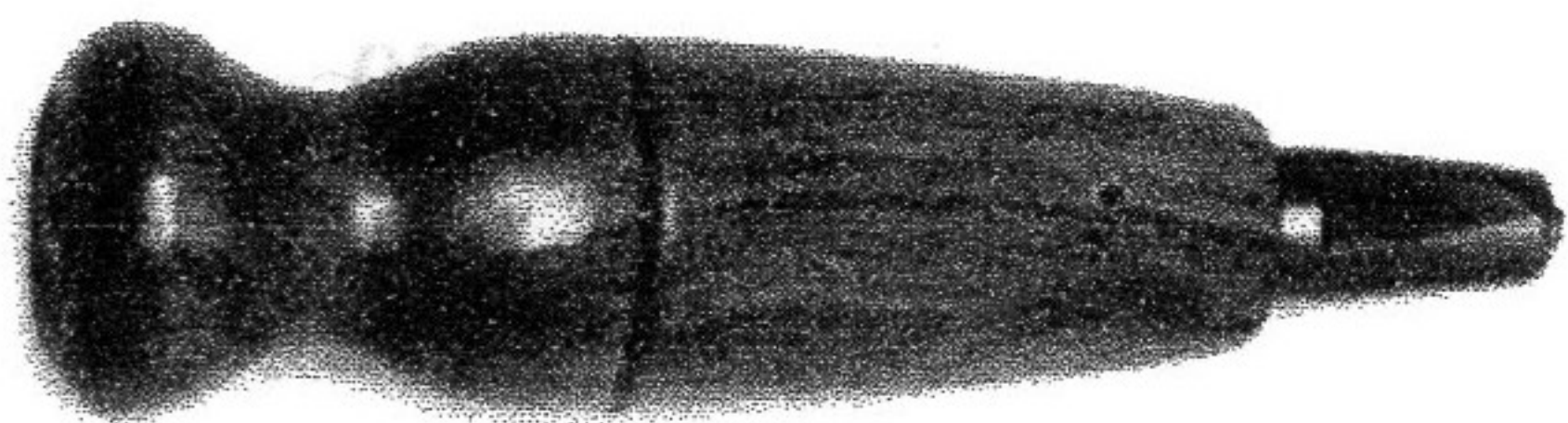


AWLS & AWL HAFTS



T- 143-H Peg Awl Haft. A widely used type of awl haft. Made with chuck & wrench to permit easy changing of awls. Leather tipped to prevent splintering when hammered.



T- 145-H Sewing Awl Haft
A popular sewing awl haft. Widely used by shoe makers. Knobbed end permits easy grasp and prevents slipping. Made of hard maple.



HARNESS AWLS



T- 1221-2 Stabbing Awl 2 5/8" long
Made In Italy.



T- 45 2 1/4" Length.

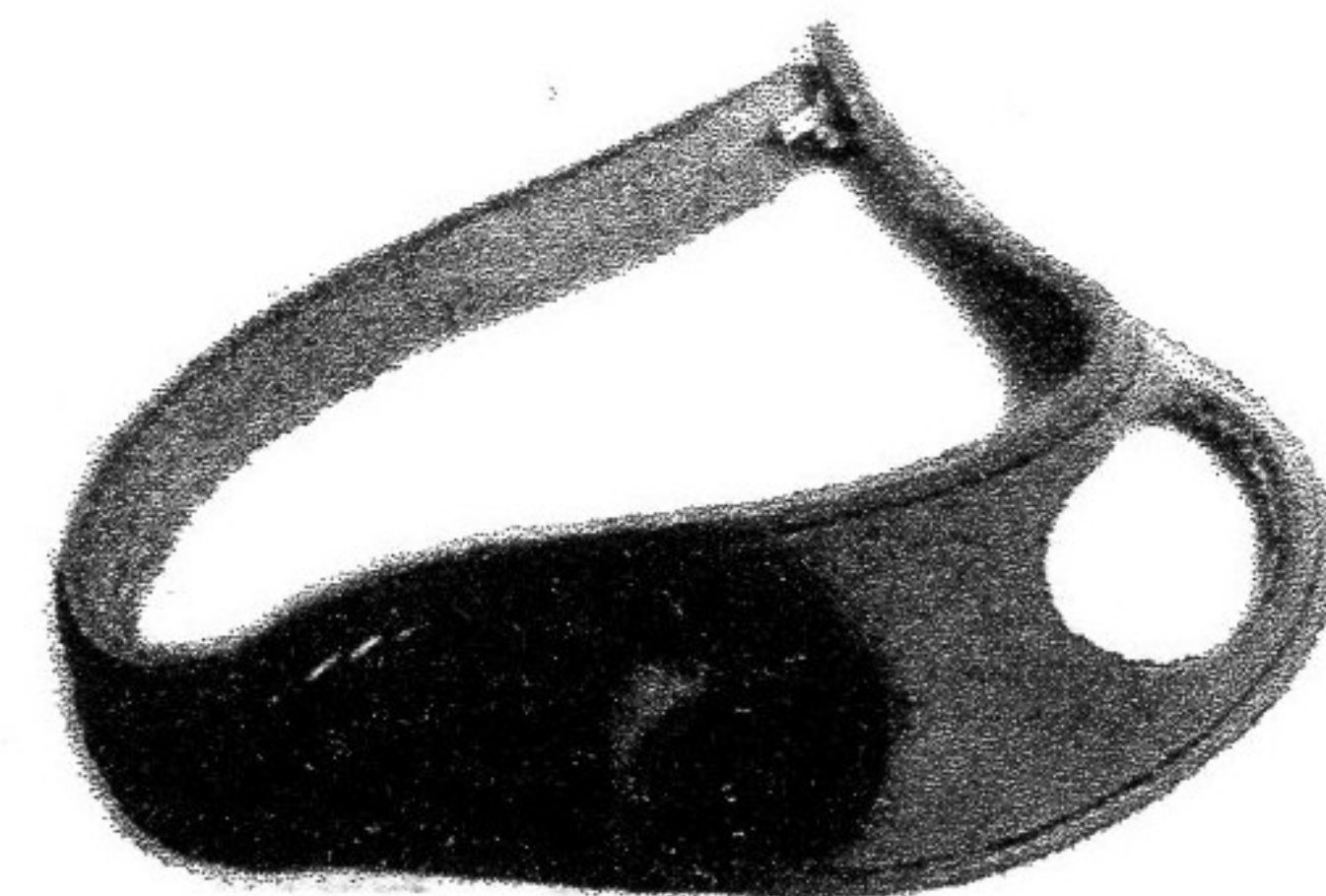


T- 32 2 1/2" Length
Stabbing Awl, Round Point.



T- 43 1 3/4" Length.

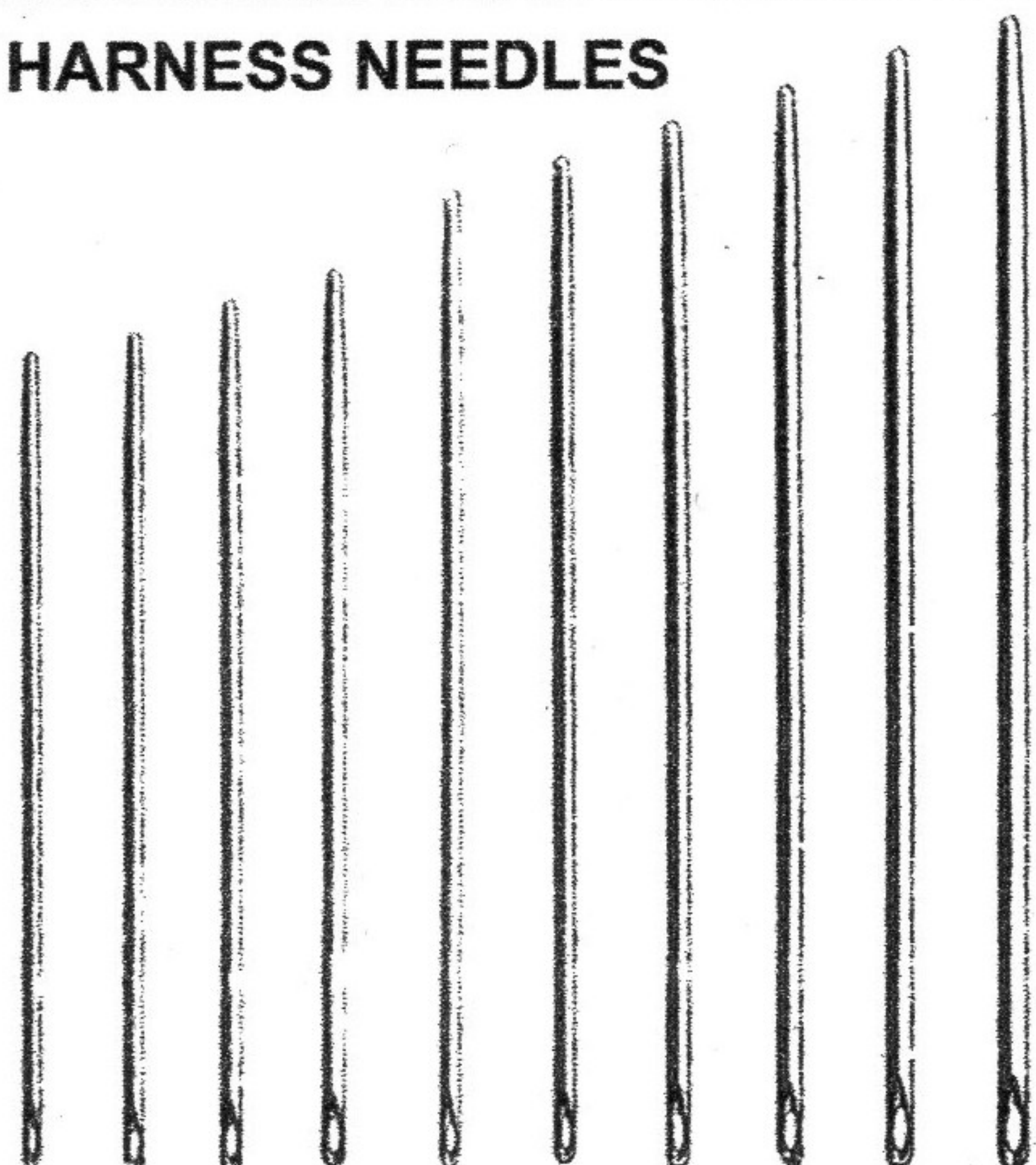
SEWING PALM



T- 266

Sewing Palm
A hide bound, iron thimble, palm. Riveted joints. Specify: left or right

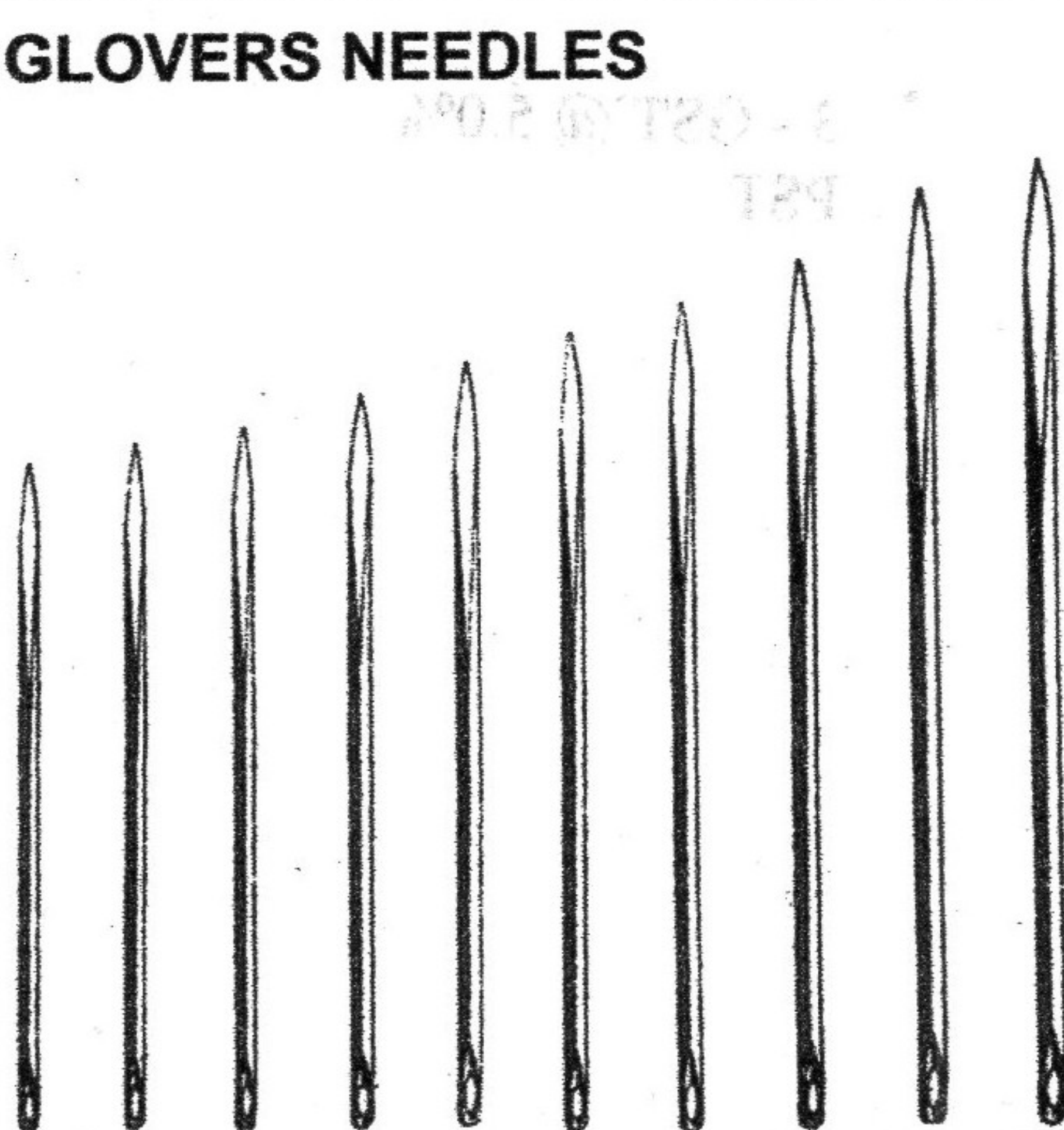
HARNESS NEEDLES



SIZES: 7 6 5 4 3 2 1 0 00 000

T- 517 Harness Needles (Dull Point)
Sold 25 per Size per Pkg.

GLOVERS NEEDLES



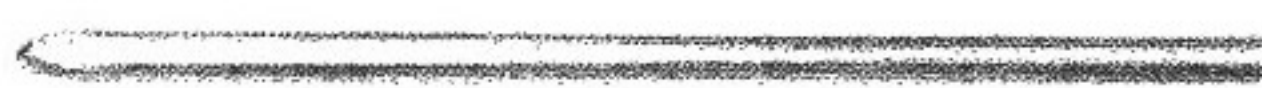
SIZES: 7 6 5 4 3 2 1 0 00 000

T- 518 Glovers Needles (Three Cornered Point)
Sold 25 per Size per Pkg.

RAW HIDE LACING NEEDLES

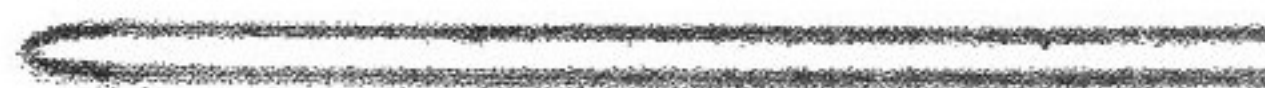
T- 1279

Solid Brass
Threaded Lacing Needle
Holds 3/32" & 1/8" Lacing.

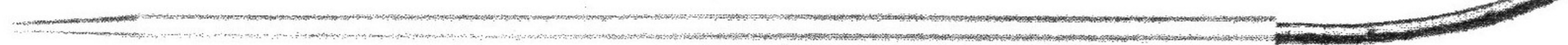


T- 1280

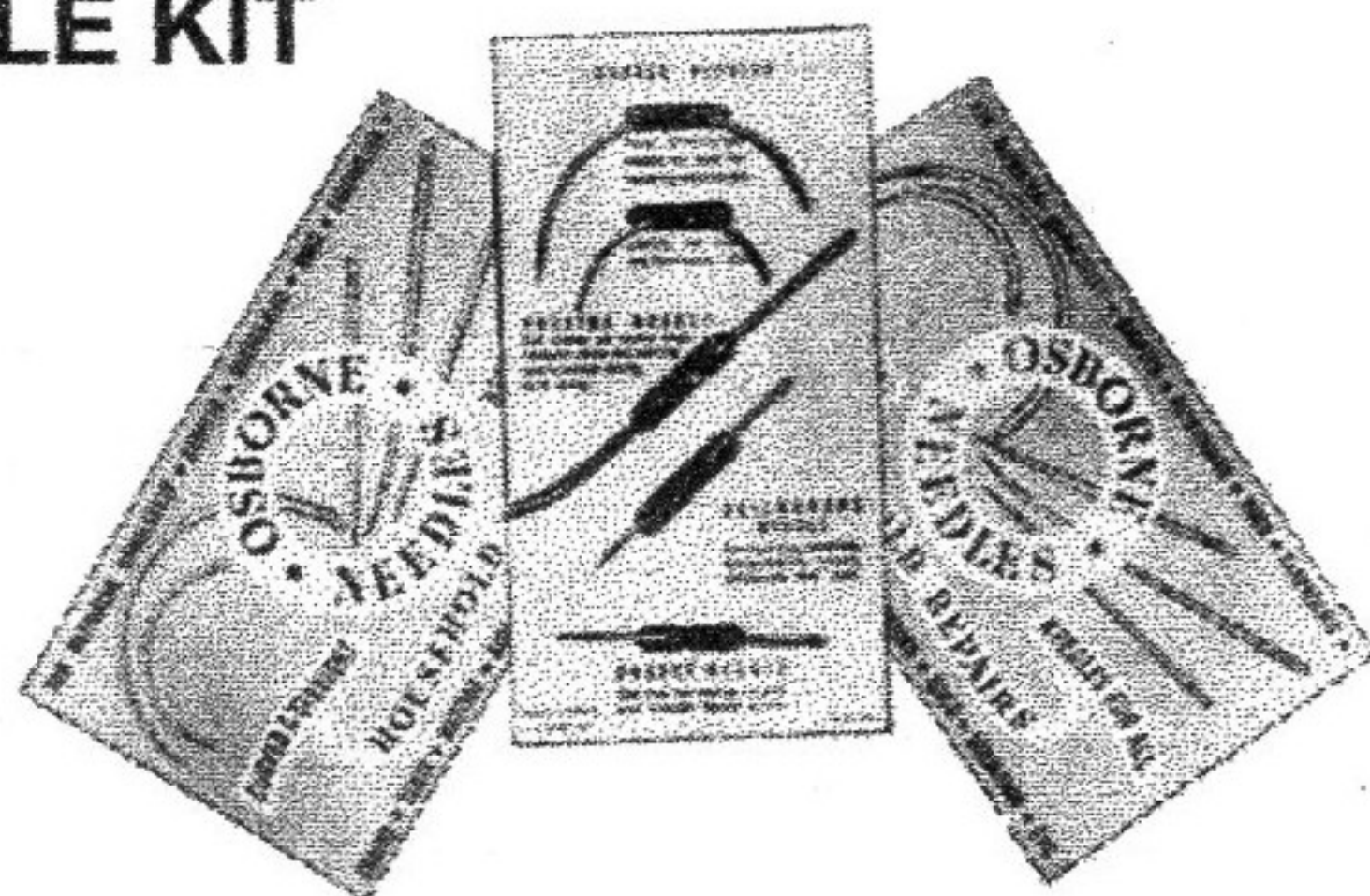
Solid Brass
Threaded Lacing Needle
Holds 1/8", 5/32" Lacing.



T- 1278 EASY LACER
Solid Steel
Threaded Lacing Needle.
Holds 1/16" to 1/8" Lacing.



NEEDLE KIT



NK- 1

A unique professional needle assortment. Not available in most stores. Kit Contains:

- 2 Curved upholstery needles
- 1 Special bent needle - for sewing with string.
- 1 Awning or canvas needle (excellent for sewing sails)
- 1 Carpet or very heavy material needle